



## ► Wall Wrap on Concrete, Masonry & Tile

**Test vinyl wall/paint compatibility prior to any wall project.**

Wall wraps are an excellent means of expanding advertising space and extending your brand message. To protect your customer's graphics and create the best first impression, the following installation recommendations are provided.

**Best practice is to use Series 3200, Series 3210, or Series 3220 overlamine on graphics.**

### Surface Preparation:

- A. The surface must be entirely dust free. Pressure washing with 1:20 ratio of TSP (trisodium phosphate) to warm water mixture followed by a warm water rinse will remove most surface oxidation and accumulated debris and chalk. For heavier accumulation, use a stiff bristle brush with the same TSP solution. Warm water rinse and allow the wall to dry for two (2) days.
- B. For the best long-term results, seal the surface with a coat of paint or concrete sealer, allowing a minimum of two weeks drying time. In cold or high humidity environments, an extended drying time is recommended. Failure to allow paint to fully cure will result in an incomplete bond of paint to wall surface. Subsequent repositioning of graphics may lift paint from the wall. Use of a sealant provides a more reliable base for installation. Additionally, removal will be much easier: the adhesive will strip off more cleanly as will incidental adhesive residue.

### Installation Tools Required:

- A. Heat Gun
- B. High Density Foam Rubber Roller Designed for Wall Installation
- C. IR Thermocouple
- D. Heat Resist Gloves

**To assure highest adhesion the following steps are recommended:**

- A. Align graphic at the top and hinge apply masking tape to secure the top edge of graphics.
- B. Remove liner from graphics and loosely tack on graphic to wall.
- C. Preheat film to a minimum of 100°C prior to rolling on the wall using 2-3" high density rubber roller horizontally across the wall side to side.



Figure 1: Installing vertical grout.



Figure 2: Horizontal across the image.

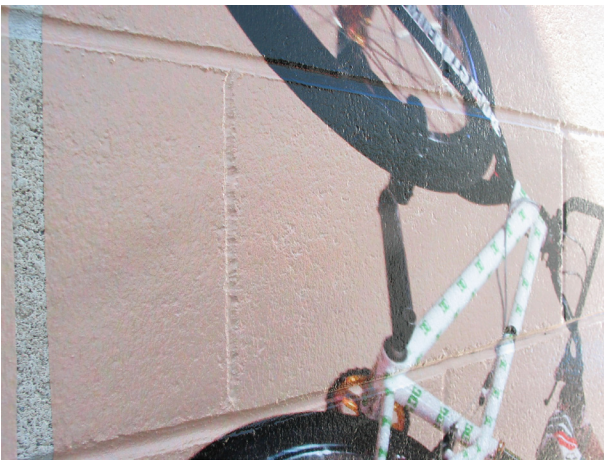


Figure 3: Example of good installation technique where grout lines are visible and vinyl takes the topography of the wall.



Figure 4: Example of bad install with popped graphics in grout.

Edge seal of graphic is recommended for high moisture environment.

### Application Restrictions:

- A. Avoid excessively deep sharp grout lines. As the film will be punctured during installation and lift prematurely. Acceptable grout lines are uniform, smooth and less than 1/8" deep.
- B. Very rough trowelled surfaces or sharp stucco will tend to puncture graphics during installation. Surfaces as seen below are not intended for Arlon wall specified vinyls.
- C. Avoid using butt seams to panel graphics. It is highly recommended to overlap panels with an overlap of at least 1/4 inch to accommodate for any shrinkage that may occur.

**Maintenance:**

A. Using a low pressure, warm water and simple green (1:1) mixture wash will keep the graphics clean and remove contamination that might stain the surface. Do not exceed 1300 psi and maintain an angle of spray no shallower than 60 degrees vertically or horizontally (see Figure 7). Power washing should start from the center of the graphics and move outward (see figure 8). If necessary use a soft sponge to remove debris that remain adhered to the surface.



Figure 5: Example of stucco surface.



Figure 6: Example of troweled surface.

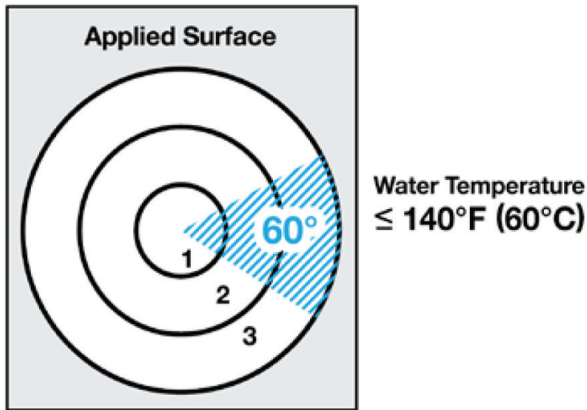


Figure 7: Spray no shallower than 60° vertically or horizontally.

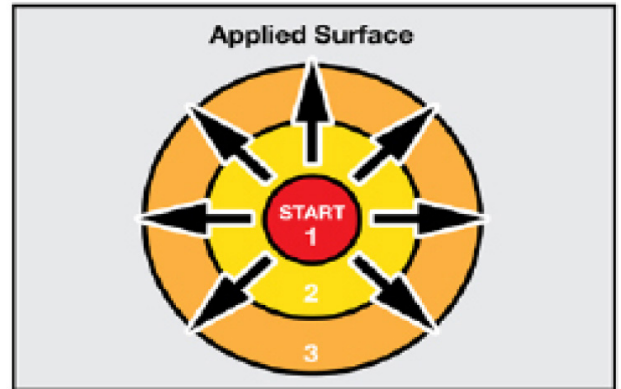


Figure 8: Work outward from center when cleaning surface.

**Removal:**

A. Heat assist or remove on a warm day.